



# Resolution 960

 KPC-VNS302NUV10

Resolution 960 Series 750+IR  
Varifocal 3-Axis Dual Voltage  
IP66 Vandal Dome Camera

#### Ordering Information

NTSC Models

KPC-VNS302NUV10 2.8~11mm VF



# Resolution 960

KPC-VNS302NUV10

## Resolution 960 Series 750+IR Varifocal 3-Axis Dual Voltage IP66 Vandal Dome Camera



### Key Features

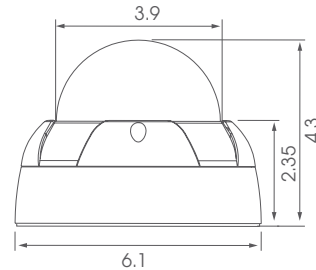
- Superlative resolution of over 750 horizontal TV lines for amazing image quality
- 960H CCD sensor with high IR sensitivity
- True Day/Night zero light operating range of 100 feet or more from 30 IR LEDs (depending on scene reflectivity)
- Simple and easy to use OSD setup menu
  - Digital Wide Dynamic Range to properly expose images despite unbalanced lighting in the scene
  - Anti Color Roll white balance option resists fluorescent light interference
  - Optional Back Light Compensation (BLC) and Highlight Compensation (HLC)
  - Adjustable 2D-Noise Reduction to increase picture clarity and improve utilization of DVR disk storage
  - Privacy image masking for 4 configurable zones
- 2.8-11mm Aspheric Varifocal DC iris lens to capture the desired field of view
- Dual voltage (12VDC/24VAC) with Anti Color Roll
- IP66 weather resistant
- Extreme Operating temperature down to -40 degrees
- Service Video output for convenient installation, and ease of service
- 3-Axis gimbal for convenient wall or ceiling mounting
- Optional wall mount arm (WM100)

Wall-Mount Bracket Option Available

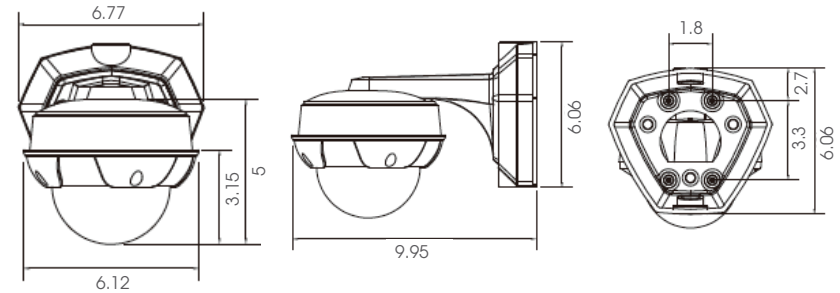
KA-WM100 Wall Mounting Bracket with 1/2" conduit fittings top and bottom.



Dimension (Unit: inch)



### Optional Accessories (Unit: inch)



### Technical Specification

Imaging Device	1/3" 960H High Sensitivity CCD
Video Format	NTSC
Picture Elements	NTSC: 1020(H)x508(V)
Effective Picture Elements	NTSC: 976(H) x 494(V)
Horizontal Resolution	More than 750 TVL
Sensitivity	0.09 lux color/F1.2; 0.08lux BW (LED Off) 0 lux with IR
IR LED	30, 850nm
IR Range	100'
S/N Ratio	Over 50dB (AGC off)
Video Output	BNC 1.0V p-p 75Ω; video test point inside dome, cable supplied
Gamma Correction	0.45
Lens Type	Aspheric Varifocal DC Iris 2.8-11mm F=1.6
Lens Positioning	3-axis flexible positioning for wall or ceiling mounting
Back Light Compensation	OFF/BLC/HLC Selectable
Auto Gain Control	Off/Low/Middle/High
Electronic Shutter	Auto; or 1/60, FLK, 1/250, 1/500, 1/1000, 1/2000, 1/4000, 1/5000, 1/10000, 1/100000
White Balance	ATW/AWB/AWC->SET/Anti-Color Roll/Manual
Sync. Mode	Internal (plus Anti-Chroma Crawl White Balance option above)
Day & Night	Auto True D/N with motorized ICR: controlled by photo sensor
OSD Menu	Multiple functions using 3-axis joystick
OSD Languages	English, Spanish, Portuguese, German, Russian, Japanese, Chinese, French
2D-DNR	On/Off (Level Adjustable)
Digital Wide Dynamic Range	On/Off (Level Adjustable)
Mirror	Off/On
Motion Detection	Off/On for 4 selectable zones (On screen indication)
Privacy Mask	Off/On for 8 selectable zones
Lens Shading Correction	Off/On with adjustable level and center
Other OSD Functions	Camera Title with position, Font Color, Image Contrast/Sharpness, CRT/LCD display optimization, Negative Image
Power Source	12V DC / 24V AC
Power Consumption	12VDC:150mA max. / 24VAC:2.3W max.
Operating Temperature	-40 °F ~ 140 °F (-40 °C ~ 60 °C)
Environmental	IP66 (Weather Resistant)
Mechanical	Vandal proof dome
Dimensions	5.92"(150.5mm) dia. x 4.27"(108.5mm) high
Weight	1.92 lb. (869g)
Mounting Options	Direct ceiling or wall mount (3-axis positioning) Optional wall mount arm (WM100)
Certifications	CE / FCC / RoHS